



Media Release

July 21, 2024

For immediate release

11:30 am PST

Evacuation Alert issued for Mulvey Creek wildfire

Nelson, BC: On the recommendation of the BC Wildfire Service (BCWS), the Regional District of Central Kootenay (RDCK) Emergency Operations Centre (EOC) has issued an Evacuation Alert for 16 properties due to the Mulvey Creek wildfire (N51117), which is part of the Slocan Lake Complex. Located west of the Village of Slocan on the southern edge of Valhalla Provincial Park in Electoral Area H, the wildfire was originally discovered on July 18. The suspected cause of the fire is lightning strikes and has been categorized as out of control. See map of the Evacuation Alert area below.

The Evacuation Alert covers the following properties:

ADDRESSES

7300 Mulvey Creek Road
7315 Mulvey Creek Road
7555 Mulvey Creek Road
7780 Mulvey Creek Road
7995 Mulvey Creek Road
6000 Mulvey Creek Way

6005 Mulvey Creek Way
7255 Little Slocan FSR
7613 Little Slocan FSR
7650 Little Slocan FSR
8745 Slocan West Road

PIDs

008-362-033
009-728-911
011-841-150
012-343-510
023-527-722

At this time residents or visitors within the area are not required to evacuate, however the RDCK advises people to remain vigilant and be prepared to leave the area at a moment's notice. It is recommended to prepare a grab-and-go bag packed with the essentials and make a plan of where to go if you are evacuated. Emergency Services Support (ESS) provides a tool to register online if you are on Evacuation Order or if you are preparing for an evacuation. To register or create a profile go to <https://ess.gov.bc.ca/>.

Part of your plan should also include moving pets and livestock to a safe area in the event the situation worsens and an Evacuation Order is enforced.

Updates or changes to the Evacuation Alert will be provided via the [RDCK website](#), [Facebook](#), and [X](#) as more information becomes available. For details about evacuation and emergency preparedness, along with other resources, please visit www.rdck.ca/eocinfo. The RDCK EOC public inquiry line is 250.352.7701.

For up to date information on current wildfire activity, conditions and prohibitions, call 1.888.336.7378 or visit www.bcwildfire.ca.

For more information about evacuations and emergency preparedness, along with other resources:

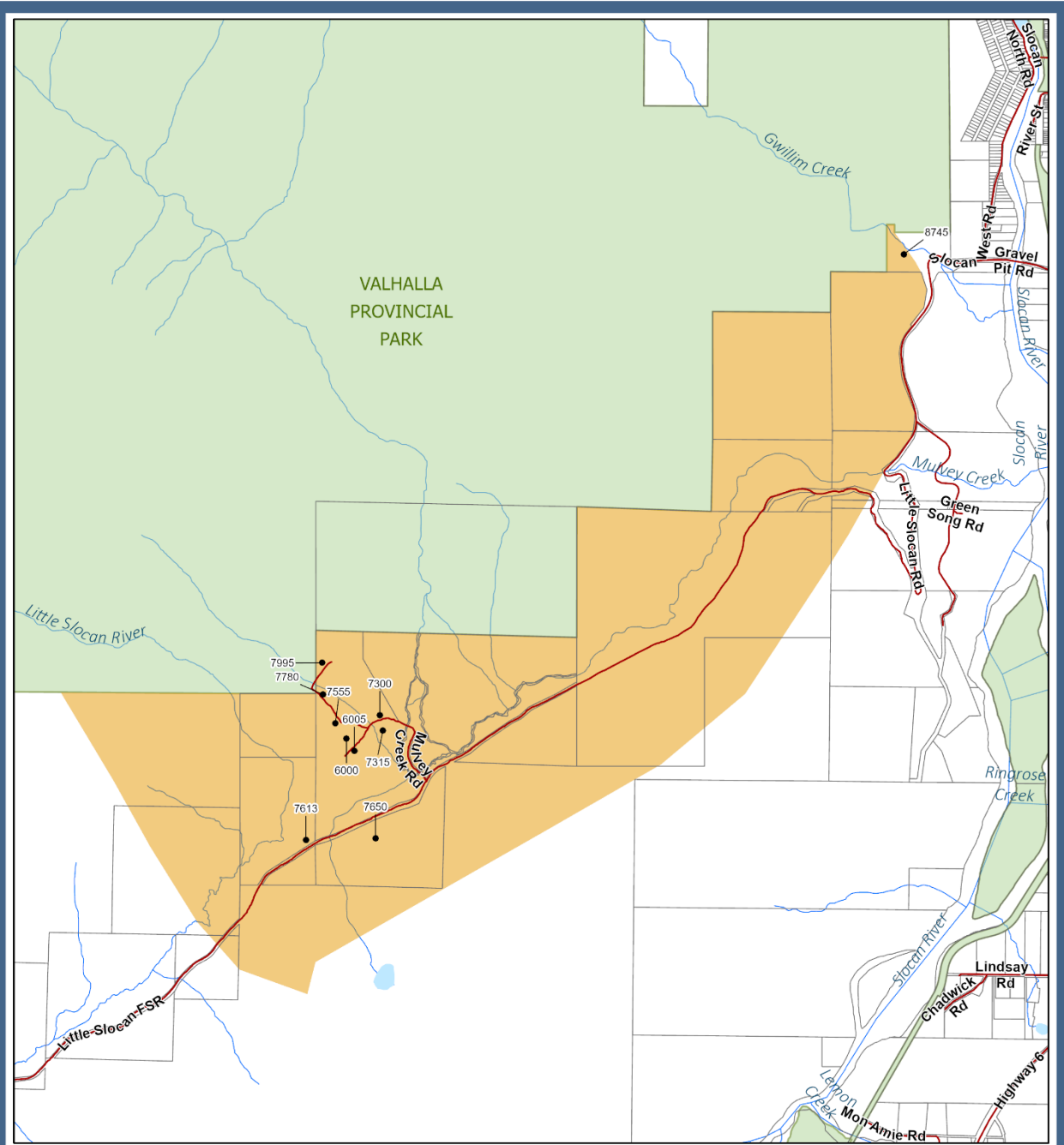
- [Current RDCK Evacuation Alerts, Orders and Rescinds](#) or call 250.352.7701
- [Sign up for RDCK Emergency Notification System to receive notifications](#)
- [RDCK web map](#)
- [Public weather alerts for BC from Environment Canada](#)
- [BC Wildfire – Interactive Map of Current Events](#)
- [Fortis BC Outage Map](#) or call 1.866.436.7847
- [BC Hydro outage map](#) or call 1.800.224.9376
- [Nelson Hydro](#) 1.877.324.9376
- [Drive BC](#) for highway closures and road conditions
- [For BC Air Quality Health Index](#)
- [Prepared BC](#)

Incorporated in 1965, the Regional District of Central Kootenay (RDCK) is a local government that serves 60,000 residents in 11 electoral areas and nine member municipalities. The RDCK provides more than 160 services, including community facilities, fire protection and emergency services, grants, planning and land use, regional parks, resource recovery and handling, transit, water services and much more. For more information about the RDCK, visit www.rdck.ca.

-30-

For media enquiries:

EOC Information Officer
Regional District of Central Kootenay
Tel: 250.352-7701
Email: eocinfo@rdck.bc.ca



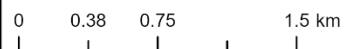
REGIONAL DISTRICT OF
CENTRAL KOOTENAY
EMERGENCY
OPERATIONS CENTRE

EOC Phone: 250-352-7701 or 1-866-522-7701
Current Emergency Information:
rdck.ca/EOCinfo
Register to receive emergency notifications:
rdck.ca/notifications
To report a flood, landslide, spill or other hazards:
1-800-663-3456

Mulvey Creek Wildfire Evacuation Alert

- Evacuation Alert
- Legal Parcels

Date: 7/21/2024
Map Scale: 1:31,561



The mapping information shown are approximate representations and should only be used for reference purposes. The Regional District of Central Kootenay is not responsible for any errors or omissions on this map.